

**2005**



**Houchens Industries/KHSAA  
Girls' Sweet 16®  
State Basketball Tournament**

**Final Game Stats  
Session 5 ~ Game 1  
Friday, March 25  
Lexington Catholic Knights  
vs.  
Scott County Cardinals**



**March 23-26  
Diddle Arena  
Bowling Green**

# 2005 HOUCHENS INDUSTRIES/KHSAA GIRLS' SWEET 16 - Game Box Score

## Lexington Catholic Lady Knights vs. Scott County Lady Cardinals

**Date: 03/25/2005 Time: Noon CST Site: Diddle Arena-Bowling Green, KY Attendance: Unknown**

Visitors: Scott County Lady Cardinals															
##	Name	P	FG	3 Pt	FT	PTS	ORB	DRB	TR	PF	AST	TO	BS	ST	MIN
00	* Chelsia Lymon		5/13	0/1	3/4	13	1	1	2	5	6	5	0	1	30:19
3	Brillia Garr		0/1	0/1	0/0	0	0	0	0	1	0	0	0	0	7:01
10	Holly Milburn														DNP
11	Jessica Wilson														DNP
14	Regan Grimes														DNP
15	* Rebecca Gray		12/27	1/4	4/6	29	5	1	6	3	1	6	0	1	32:00
20	* Michelle Howard		3/10	1/7	0/0	7	0	1	1	1	1	2	0	0	26:40
22	Samantha Norman														DNP
23	Madison Webb														DNP
32	* Aimee Bruckner		2/5	0/0	0/0	4	4	3	7	1	0	0	3	1	23:13
34	* Suzie Owens		4/5	1/1	2/2	11	4	5	9	5	0	1	1	1	21:26
44	Sarah McLeod														DNP
54	Ausha Weathers		2/5	1/2	2/4	7	1	3	4	3	0	1	0	3	19:21
24	Sarah Wilson														DNP
40	Bryonna Dawson														DNP
	Team						3	1	4						
	<b>Totals</b>		<b>28/66</b>	<b>4/16</b>	<b>11/16</b>	<b>71</b>	<b>18</b>	<b>15</b>	<b>33</b>	<b>19</b>	<b>8</b>	<b>15</b>	<b>4</b>	<b>7</b>	<b>160</b>
	<b>Total FG</b>		1st Half	12/32	37.5%	2nd Half	16/34	47.1%	Game	28/66	42.4%				
	<b>3 PT FG</b>		1st Half	1/7	14.3%	2nd Half	3/9	33.3%	Game	4/16	25.0%				
	<b>Free Throws</b>		1st Half	5/8	62.5%	2nd Half	6/8	75.0%	Game	11/16	68.8%				

Home: Lexington Catholic Lady Knights															
##	Name	P	FG	3 Pt	FT	PTS	ORB	DRB	TR	PF	AST	TO	BS	ST	MIN
1	* Adaeze Azubuike		3/6	3/4	0/0	9	0	3	3	3	3	0	1	0	16:38
2	* Anaris Sickles		4/7	0/0	3/4	11	0	8	8	1	1	4	0	0	31:41
3	Briana Green		4/9	0/2	9/12	17	4	3	7	1	3	2	0	2	26:53
4	* Keyla Snowden		2/6	2/4	6/6	12	0	4	4	3	1	3	1	1	17:33
5	Katie Scordo		0/0	0/0	0/0	0	0	0	0	1	0	0	0	0	0:19
10	Rebecca Rhule		2/4	1/2	0/0	5	2	0	2	0	0	0	0	0	5:58
12	* Nikki Davis		1/5	0/1	0/0	2	1	2	3	5	5	5	0	1	13:40
21	Kellie Cash		0/0	0/0	0/0	0	0	0	0	0	0	1	0	0	0:19
23	Natalie Novosel		7/9	1/1	2/2	17	1	1	2	0	2	1	1	1	26:23
25	Ashley Devers		0/0	0/0	0/0	0	0	0	0	0	0	0	0	0	0:38
31	Lesley Server		0/0	0/0	0/0	0	0	0	0	0	0	0	0	0	0:38
32	Elizabeth Elam		0/0	0/0	0/0	0	0	0	0	0	0	0	0	0	0:19
33	* Shannon Novosel		5/7	0/0	0/0	10	1	1	2	4	2	3	1	0	19:01
	Team						3	1	4						
	<b>Totals</b>		<b>28/53</b>	<b>7/14</b>	<b>20/24</b>	<b>83</b>	<b>12</b>	<b>23</b>	<b>35</b>	<b>18</b>	<b>17</b>	<b>19</b>	<b>4</b>	<b>5</b>	<b>160</b>
	<b>Total FG</b>		1st Half	18/34	52.9%	2nd Half	10/19	52.6%	Game	28/53	52.8%				
	<b>3 PT FG</b>		1st Half	6/12	50.0%	2nd Half	1/2	50.0%	Game	7/14	50.0%				
	<b>Free Throws</b>		1st Half	5/6	83.3%	2nd Half	15/18	83.3%	Game	20/24	83.3%				

	SCOTT		LCATH		SCOTT		LCATH		SCOTT		LCATH	
Free Throw Pts	11	20	3Pt Points	12	21	Pts/Possession	0.99	1.15				
Pts off Turnovers	15	13	2nd Chance Points	10	11	Pts off Bench	7	39				
Total Rebounds	33	35	Team Rebounds	4	4	Dead Ball Reb	2	2				
Off Rebound %	43.9	44.4	Def Rebound %	55.6	56.1	Total Rebound %	48.5	51.5				
Technical Fouls	SCOTT		None									
	LCATH		None									
Officials	Ron Price, Michael Ashurst, Jason Baker											

	Qtr 1	Qtr 2	Qtr 3	Qtr 4	OT 1	OT 2	OT 3	OT 4	Total
Scott County Lady Cardinals	9	21	22	19	0	0	0	0	71
Lexington Catholic Lady Knights	16	31	18	18	0	0	0	0	83

2005 HOUGHENS INDUSTRIES/KHSAA GIRLS' SWEET 16 - Play by Play Report - Period: 1 (pg 1)

Lexington Catholic Lady Knights vs. Scott County Lady Cardinals

Date: 03/25/2005 Time: Noon CST Site: Diddle Arena-Bowling Green, KY Attendance:

Name	Action	Action	Score	Clock	Diff	Name	Action	Action
1 A Azubuike	Start Game					00 C Lymon	Start Game	
2 A Sickles	Start Game					15 R Gray	Start Game	
4 K Snowden	Start Game					20 M Howard	Start Game	
12 N Davis	Start Game					32 A Bruckner	Start Game	
33 S Novosel	Start Game					34 S Owens	Start Game	
A Sickles	Jump Ball Win			1 7:58		S Owens	Jump Ball Loss	
N Davis	FG Attempt			1 7:48		S Owens	Block	S Owens Def Reb
N Davis	Personal Foul			1 7:45				
				1 7:41		R Gray	Turnover	(Bad Pass)
K Snowden	Steal			1 7:40				
K Snowden	Turnover	(Bad Pass)		1 7:20				
				1 7:07		R Gray	FG Attempt	A Bruckner Off Reb
K Snowden	Def Rebound			1 7:05		A Bruckner	Putback Att	
S Novosel	FG Attempt	LCATH Off Reb		1 6:52		A Bruckner	Block	
K Snowden	3Pt Attempt	N Davis Off Reb		1 6:48				
N Davis	Putback Made		2-0	1 6:46	+2			
K Snowden	Def Rebound			1 6:37		R Gray	FG Attempt	
A Azubuike	3Pt Attempt			1 6:19		A Bruckner	Def Rebound	
			2-2	1 6:11	(T1)	R Gray	FG Made	
N Davis	FG Attempt			1 5:49		SCOTT	Def Rebound	
N Davis	Def Rebound			1 5:39		M Howard	3Pt Attempt	
				1 5:33		S Owens	Personal Foul	
A Azubuike	3Pt Made	K Snowden Assist	5-2	1 5:21	+3			
A Sickles	Def Rebound			1 5:04		R Gray	FG Attempt	
N Davis	3Pt Attempt			1 4:43		M Howard	Def Rebound	
S Novosel	Personal Foul			1 4:37				
N Davis	Leave Game			1 4:37				
B Green	Enter Game	for S Novosel		1 4:37				
N Novosel	Enter game	for K Snowden		1 4:37				
S Novosel	Enter game			1 4:37				
			5-4	1 4:33	+1	M Howard	FG Made	
A Azubuike	3Pt Made	S Novosel Assist	8-4	1 4:19	+4			
				1 4:05		R Gray	Turnover	(Bad Pass)
				1 3:43		S Owens	Personal Foul	
				1 3:43		A Weathers	Enter Game	for S Owens
A Sickles	FT Attempt	LCATH Deadball Reb		1 3:43				
A Sickles	FT Made		9-4	1 3:43	+5			
R Rhule	Enter Game	for S Novosel		1 3:43				
N Novosel	Def Rebound			1 3:34		M Howard	3Pt Attempt	
A Sickles	FG Attempt			1 3:22		A Bruckner	Block	A Weathers Def Reb
				1 3:14		A Weathers	FG Attempt	SCOTT Off Reb
				1 3:01		R Gray	FG Attempt	R Gray Off Reb
			9-6	1 2:59	+3	R Gray	Putback Made	
R Rhule	3Pt Attempt	R Rhule Off Reb		1 2:46				
B Green	3Pt Attempt			1 2:38		SCOTT	Def Rebound	(Dead Ball Reb)
	Official Time Out			1 2:37			Official Time Out	
				1 2:31		C Lymon	Turnover	(Bad Pass)
A Azubuike	Leave Game			1 2:31				
K Snowden	Enter Game	for R Rhule		1 2:31				
N Davis	Enter game			1 2:31				
N Davis	Turnover	(Bad Pass)		1 2:10				
				1 2:10		A Weathers	Turnover	(Bad Pass)
B Green	Turnover	(Traveling)		1 2:09				
				1 2:07		R Gray	Personal Foul	
				1 2:07		R Gray	Turnover	
N Novosel	FG Attempt	LCATH Off Reb		1 1:44		A Bruckner	Block	
K Snowden	3Pt Made	N Davis Assist	12-6	1 1:42	+6			
A Sickles	Personal Foul		12-7	1 1:35	+5	C Lymon	FT Made	
A Sickles	Def Rebound			1 1:35		C Lymon	FT Attempt	
N Davis	Offensive Foul			1 1:26				
N Davis	Turnover			1 1:26				

2005 HOUCHEM INDUSTRIES/KHSAA GIRLS' SWEET 16 - Play by Play Report - Period: 1 (pg 2)

Lexington Catholic Lady Knights vs. Scott County Lady Cardinals

Date: 03/25/2005 Time: Noon CST Site: Diddle Arena-Bowling Green, KY Attendance:

Name	Action	Action	Score	Clock	Diff	Name	Action	Action
A Azubuike	Enter Game	for N Davis		1 1:26				
K Snowden	Block			1 1:18		R Gray	3Pt Attempt	R Gray Off Reb
A Azubuike	Def Rebound			1 1:14		M Howard	FG Attempt	
N Novosel	FG Made		14-7	1 1:07	+7			
				1 1:00		M Howard	Turnover	(Fumble)
				1 1:00		B Garr	Enter Game	for M Howard
S Novosel	Enter Game	for A Azubuike		1 1:00				
K Snowden	Turnover			1 0:49				
				1 0:48		A Bruckner	Steal	
S Novosel	Def Rebound			1 0:40		C Lymon	FG Attempt	
S Novosel	FG Made	B Green Assist	16-7	1 0:28	+9			
			16-9	1 0:03	+7	C Lymon	FG Made	

End of Period Summary Lady Knights 16 Lady Cardinals 9

Largest Lead: Lady Knights 16 Lady Cardinals 7 (9 pts)

Lead in Period: Lady Knights 16 Lady Cardinals 7 (9 pts)

5 for 0 oppo pts

4 for 2 pts

6/16 for 37.5 %

1/2 for 50.0 %

Turnovers

2nd Chances

Field Goals

Free Throws

Lead Changes: 0 Ties: 1

Lead Changes: 0 Ties: 1 (this period)

6 for 4 oppo pts

4 for 2 pts

4/15 for 26.7 %

1/2 for 50.0 %

2005 HOUCHEM INDUSTRIES/KHSAA GIRLS' SWEET 16 - Play by Play Report - Period: 2 (pg 1)

Lexington Catholic Lady Knights vs. Scott County Lady Cardinals

Date: 03/25/2005 Time: Noon CST Site: Diddle Arena-Bowling Green, KY Attendance:

Name	Action	Action	Score	Clock	Diff	Name	Action	Action
K Snowden	3Pt Made	B Green Assist	19-9	2 7:51	+10			
K Snowden	Def Rebound			2 7:34		C Lymon	FG Attempt	
S Novosel	FG Attempt	B Green Off Reb		2 7:25				
B Green	FT Made		20-9	2 7:24	+11	A Weathers	Personal Foul	
B Green	FT Made		21-9	2 7:24	+12			
A Azubuike	Enter Game	for S Novosel		2 7:24				
				2 7:17		R Gray	FG Attempt	R Gray Off Reb
			21-11	2 7:14	+10	R Gray	Putback Made	
A Sickles	FG Made	A Azubuike Assist	23-11	2 6:52	+12			
K Snowden	Personal Foul			2 6:48				
				2 6:48		M Howard	Enter Game	for B Garr
				2 6:30		C Lymon	Turnover	
N Novosel	Steal			2 6:28				
N Novosel	Layup Made		25-11	2 6:27	+14			
				2 6:18	+12	SCOTT	Time Out	
			25-13	2 6:18	+12	R Gray	FG Made	
A Sickles	Turnover	(Bad Pass)		2 6:08				
				2 6:07		A Weathers	Steal	
A Azubuike	Personal Foul			2 6:06				
S Novosel	Enter Game	for A Azubuike		2 6:06				
				2 6:06		S Owens	Enter Game	for A Bruckner
			25-14	2 6:06	+11	A Weathers	FT Made	
			25-15	2 6:06	+10	A Weathers	FT Made	
K Snowden	3Pt Attempt			2 5:56		A Weathers	Def Rebound	
				2 5:45	+8	R Gray	FG Made	M Howard Assist
				2 5:39		C Lymon	Personal Foul	
B Green	FG Made		27-17	2 5:35	+10			
				2 5:21	+8	C Lymon	Layup Made	
B Green	FG Attempt			2 5:11		S Owens	Def Rebound	
K Snowden	Def Rebound			2 5:02		M Howard	3Pt Attempt	
N Novosel	Layup Made		29-19	2 4:52	+10			
K Snowden	Personal Foul			2 4:33				
N Davis	Enter Game	for K Snowden		2 4:33				
				2 4:33		A Bruckner	Enter Game	for A Weathers
				2 4:33		R Gray	FT Attempt	SCOTT Deadball Reb
A Sickles	Def Rebound			2 4:33		R Gray	FT Attempt	
A Sickles	FG Attempt			2 4:19		S Owens	Def Rebound	
S Novosel	Personal Foul		29-20	2 4:17	+9	S Owens	FT Made	
			29-21	2 4:17	+8	S Owens	FT Made	
				2 4:08		A Bruckner	Personal Foul	
N Davis	Leave Game			2 4:08				
A Azubuike	Enter Game	for S Novosel		2 4:08				
R Rhule	Enter game			2 4:08				
A Sickles	FT Made		30-21	2 4:08	+9			
A Sickles	FT Made		31-21	2 4:08	+10			
			31-23	2 3:54	+8	S Owens	Layup Made	
A Sickles	FG Made	A Azubuike Assist	33-23	2 3:35	+10			
			33-26	2 3:20	+7	S Owens	3Pt Made	C Lymon Assist
N Novosel	FG Attempt	R Rhule Off Reb		2 3:10				
R Rhule	Putback Made		35-26	2 3:05	+9			
				2 2:59		M Howard	Turnover	(Fumble)
B Green	Layup Made		37-26	2 2:53	+11			
A Azubuike	Block			2 2:44		R Gray	FG Attempt	
N Novosel	Off Rebound			2 2:33				
R Rhule	3Pt Made	N Novosel Assist	40-26	2 2:28	+14			
				2 2:27		SCOTT	Time Out	
			40-28	2 2:15	+12	S Owens	FG Made	C Lymon Assist
R Rhule	FG Attempt			2 1:49		C Lymon	Def Rebound	
A Sickles	Def Rebound			2 1:41		C Lymon	3Pt Attempt	
A Azubuike	3Pt Made	N Novosel Assist	43-28	2 1:23	+15			
				2 1:05		R Gray	3Pt Attempt	A Bruckner Off Reb

2005 HOUCHEM INDUSTRIES/KHSAA GIRLS' SWEET 16 - Play by Play Report - Period: 2 (pg 2)

Lexington Catholic Lady Knights vs. Scott County Lady Cardinals

Date: 03/25/2005 Time: Noon CST Site: Diddle Arena-Bowling Green, KY Attendance:

Name	Action	Action	Score	Clock	Diff	Name	Action	Action
	Official Time Out			2 1:05			Official Time Out	
			43-30	2 0:57	+13	A Bruckner	Layup Made	C Lymon Assist
N Novosel	Layup Made		45-30	2 0:46	+15			
				2 0:36		C Lymon	FG Attempt	A Bruckner Off Reb
N Novosel	Block			2 0:34		A Bruckner	Putback Att	S Owens Off Reb
				2 0:30		S Owens	Offensive Foul	
				2 0:30		S Owens	Turnover	
A Azubuike	Charge Taken			2 0:30				
				2 0:30		A Weathers	Enter Game	for S Owens
A Azubuike	Leave Game			2 0:30				
R Rhule	Leave Game			2 0:30				
K Snowden	Enter Game	for N Novosel		2 0:30				
N Davis	Enter game			2 0:30				
S Novosel	Enter game			2 0:30				
S Novosel	FG Made	N Davis Assist	47-30	2 0:08	+17			
LCATH	Def Rebound			2 0:00		C Lymon	FG Attempt	

End of Period Summary Lady Knights 47 Lady Cardinals 30

Largest Lead: Lady Knights 47 Lady Cardinals 30 (17 pts)

Lead in Period: Lady Knights 47 Lady Cardinals 30 (17 pts)

1 for 2 oppo pts  
 3 for 7 pts  
 12/18 for 66.7 %  
 4/4 for 100 %

Turnovers  
 2nd Chances  
 Field Goals  
 Free Throws

Lead Changes: 0 Ties: 1  
 Lead Changes: 0 Ties: 0 (this period)  
 3 for 6 oppo pts  
 4 for 4 pts  
 8/17 for 47.1 %  
 4/6 for 66.7 %

# 2005 HOUCHENS INDUSTRIES/KHSAA GIRLS' SWEET 16 - Game Box Score

## Lexington Catholic Lady Knights vs. Scott County Lady Cardinals

Date: 03/25/2005 Time: Noon CST Site: Diddle Arena-Bowling Green, KY Attendance: Unknown

Visitors: Scott County Lady Cardinals															
##	Name	P	FG	3 Pt	FT	PTS	ORB	DRB	TR	PF	AST	TO	BS	ST	MIN
00	* Chelsia Lymon		2/7	0/1	1/2	5	0	1	1	1	3	2	0	0	16:00
3	Brillia Garr		0/0	0/0	0/0	0	0	0	0	0	0	0	0	0	2:12
10	Holly Milburn														DNP
11	Jessica Wilson														DNP
14	Regan Grimes														DNP
15	* Rebecca Gray		5/13	0/2	0/2	10	3	0	3	1	0	3	0	0	16:00
20	* Michelle Howard		1/5	0/3	0/0	2	0	1	1	0	1	2	0	0	13:48
22	Samantha Norman														DNP
23	Madison Webb														DNP
32	* Aimee Bruckner		1/3	0/0	0/0	2	3	1	4	1	0	0	3	1	14:27
34	* Suzie Owens		3/3	1/1	2/2	9	1	3	4	3	0	1	1	0	9:53
44	Sarah McLeod														DNP
54	Ausha Weathers		0/1	0/0	2/2	2	0	2	2	1	0	1	0	1	7:40
24	Sarah Wilson														DNP
40	Bryonna Dawson														DNP
	Team						1	1	2						
	<b>Totals</b>		<b>12/32</b>	<b>1/7</b>	<b>5/8</b>	<b>30</b>	<b>8</b>	<b>9</b>	<b>17</b>	<b>7</b>	<b>4</b>	<b>9</b>	<b>4</b>	<b>2</b>	<b>80</b>
	<b>Total FG</b>		1st Half	12/32	37.5%	2nd Half	0/0	0.00%	Game	12/32	37.5%				
	<b>3 PT FG</b>		1st Half	1/7	14.3%	2nd Half	0/0	0.00%	Game	1/7	14.3%				
	<b>Free Throws</b>		1st Half	5/8	62.5%	2nd Half	0/0	0.00%	Game	5/8	62.5%				

Home: Lexington Catholic Lady Knights															
##	Name	P	FG	3 Pt	FT	PTS	ORB	DRB	TR	PF	AST	TO	BS	ST	MIN
1	* Adaeze Azubuike		3/4	3/4	0/0	9	0	1	1	1	2	0	1	0	10:51
2	* Anaris Sickles		2/4	0/0	3/4	7	0	4	4	1	0	1	0	0	16:00
3	Briana Green		2/4	0/1	2/2	6	1	0	1	0	2	1	0	0	12:37
4	* Keyla Snowden		2/4	2/4	0/0	6	0	4	4	2	1	2	1	1	9:51
5	Katie Scordo														DNP
10	Rebecca Rhule		2/4	1/2	0/0	5	2	0	2	0	0	0	0	0	4:50
12	* Nikki Davis		1/4	0/1	0/0	2	1	1	2	2	2	2	0	0	5:23
21	Kellie Cash														DNP
23	Natalie Novosel		4/6	0/0	0/0	8	1	1	2	0	2	0	1	1	12:07
25	Ashley Devers														DNP
31	Lesley Server														DNP
32	Elizabeth Elam														DNP
33	* Shannon Novosel		2/4	0/0	0/0	4	0	1	1	2	1	0	0	0	8:21
	Team						2	1	3						
	<b>Totals</b>		<b>18/34</b>	<b>6/12</b>	<b>5/6</b>	<b>47</b>	<b>7</b>	<b>13</b>	<b>20</b>	<b>8</b>	<b>10</b>	<b>6</b>	<b>3</b>	<b>2</b>	<b>80</b>
	<b>Total FG</b>		1st Half	18/34	52.9%	2nd Half	0/0	0.00%	Game	18/34	52.9%				
	<b>3 PT FG</b>		1st Half	6/12	50.0%	2nd Half	0/0	0.00%	Game	6/12	50.0%				
	<b>Free Throws</b>		1st Half	5/6	83.3%	2nd Half	0/0	0.00%	Game	5/6	83.3%				

	SCOTT		LCATH		SCOTT		LCATH		SCOTT		LCATH	
Free Throw Pts	5	5	3Pt Points	3	18	Pts/Possession	0.81	1.31				
Pts off Turnovers	2	10	2nd Chance Points	6	9	Pts off Bench	2	19				
Total Rebounds	17	20	Team Rebounds	2	3	Dead Ball Reb	2	1				
Off Rebound %	38.1	43.8	Def Rebound %	56.3	61.9	Total Rebound %	45.9	54.1				
Technical Fouls	SCOTT		None									
	LCATH		None									
Officials	Ron Price, Michael Ashurst, Jason Baker											

	Qtr 1	Qtr 2	Qtr 3	Qtr 4	OT 1	OT 2	OT 3	OT 4	Total
Scott County Lady Cardinals	9	21	0	0	0	0	0	0	30
Lexington Catholic Lady Knights	16	31	0	0	0	0	0	0	47

2005 HOUCHEM INDUSTRIES/KHSAA GIRLS' SWEET 16 - Play by Play Report - Period: 3 (pg 1)

Lexington Catholic Lady Knights vs. Scott County Lady Cardinals

Date: 03/25/2005 Time: Noon CST Site: Diddle Arena-Bowling Green, KY Attendance:

Name	Action	Action	Score	Clock	Diff	Name	Action	Action
				3 8:00		C Lymon	Leave Game	
				3 8:00		R Gray	Leave Game	
				3 8:00		M Howard	Leave Game	
				3 8:00		A Bruckner	Leave Game	
				3 8:00		A Weathers	Leave Game	
A Sickles	Leave Game			3 8:00				
B Green	Leave Game			3 8:00				
K Snowden	Leave Game			3 8:00				
N Davis	Leave Game			3 8:00				
A Azubuike	Enter Game	for S Novosel		3 8:00				
A Sickles	Enter game			3 8:00				
K Snowden	Enter game			3 8:00				
N Davis	Enter game			3 8:00				
S Novosel	Enter game			3 8:00				
				3 8:00		C Lymon	Enter game	
				3 8:00		R Gray	Enter game	
				3 8:00		M Howard	Enter game	
				3 8:00		A Bruckner	Enter game	
				3 8:00		S Owens	Enter game	
K Snowden	Layup Att			3 7:53		S Owens	Def Rebound	
S Novosel	Block			3 7:40		C Lymon	FG Attempt	SCOTT Off Reb
			47-33	3 7:36	+14	R Gray	3Pt Made	C Lymon Assist
A Sickles	FG Attempt	LCATH Off Reb		3 7:13				
A Azubuike	FG Attempt			3 7:03		S Owens	Def Rebound	
				3 6:54		C Lymon	Turnover	(Fumble)
N Davis	Steal			3 6:53				
A Azubuike	FG Attempt			3 6:49		A Bruckner	Def Rebound	
				3 6:37		M Howard	3Pt Attempt	R Gray Off Reb
K Snowden	Personal Foul			3 6:35				
A Azubuike	Leave Game			3 6:35				
B Green	Enter Game	for K Snowden		3 6:35				
N Novosel	Enter game			3 6:35				
				3 6:20		A Bruckner	FG Attempt	S Owens Off Reb
N Davis	Personal Foul			3 6:17				
			47-35	3 6:13	+12	C Lymon	FG Made	
				3 5:56		R Gray	Personal Foul	
S Novosel	FG Made		49-35	3 5:52	+14			
A Sickles	Def Rebound			3 5:43		C Lymon	FG Attempt	
B Green	3Pt Attempt			3 5:26		R Gray	Def Rebound	
			49-37	3 5:21	+12	M Howard	Layup Made	R Gray Assist
				3 5:06		M Howard	Personal Foul	
R Rhule	Enter Game	for N Davis		3 5:06				
B Green	FT Made		50-37	3 5:06	+13			
B Green	FT Attempt			3 5:06		A Bruckner	Def Rebound	
A Sickles	Def Rebound			3 4:58		R Gray	FG Attempt	
S Novosel	FG Made	A Sickles Assist	52-37	3 4:39	+15			
			52-39	3 4:31	+13	R Gray	FG Made	
				3 4:20		R Gray	Personal Foul	
N Davis	Enter Game	for R Rhule		3 4:20				
A Sickles	Turnover	(Bad Pass)		3 4:17				
A Azubuike	Enter Game	for N Davis		3 4:17				
				3 4:08		C Lymon	Turnover	(Fumble)
N Davis	Enter Game	for A Azubuike		3 4:08				
B Green	Layup Made	N Davis Assist	54-39	3 3:56	+15			
N Davis	Def Rebound			3 3:46		R Gray	3Pt Attempt	
				3 3:41		C Lymon	Personal Foul	
A Azubuike	Enter Game	for N Davis		3 3:41				
				3 3:41		A Weathers	Enter Game	for A Bruckner
N Novosel	FT Made		55-39	3 3:41	+16			
N Novosel	FT Made		56-39	3 3:41	+17			
				3 3:28		M Howard	3Pt Attempt	S Owens Off Reb



2005 HOUCHEM INDUSTRIES/KHSAA GIRLS' SWEET 16 - Play by Play Report - Period: 3 (pg 2)

Lexington Catholic Lady Knights vs. Scott County Lady Cardinals

Date: 03/25/2005 Time: Noon CST Site: Diddle Arena-Bowling Green, KY Attendance:

Name	Action	Action	Score	Clock	Diff	Name	Action	Action
A Azubuike	Personal Foul		56-41	3 3:25		S Owens	Putback Att	R Gray Off Reb
A Azubuike	Def Rebound		59-41	3 3:22				
A Azubuike			59-43	3 3:16		R Gray	FG Attempt	
N Davis	Enter Game	for A Azubuike	59-43	3 3:13				
N Novosel	Turnover	(Traveling)	59-43	3 3:03				
A Azubuike	Enter Game	for N Davis	59-43	3 3:03				
N Novosel	3Pt Made	S Novosel Assist	59-43	3 2:52 +15		R Gray	FG Made	
			59-43	3 2:40 +18				
	Official Time Out		59-43	3 2:24 +16		C Lymon	FG Made	
N Davis	Enter Game	for A Azubuike	59-43	3 2:03			Official Time Out	
S Novosel	Turnover	(Bad Pass)	59-45	3 2:03		B Garr	Enter Game	for M Howard
			59-45	3 1:58				
			59-45	3 1:57		R Gray	Steal	
N Davis	Layup Att	B Green Off Reb	59-45	3 1:52 +14		C Lymon	Layup Made	
B Green	Putback Made		61-45	3 1:38				
			61-48	3 1:35 +16				
S Novosel	Offensive Foul		61-48	3 1:23 +13		A Weathers	3Pt Made	C Lymon Assist
S Novosel	Turnover		61-48	3 1:06				
			61-48	3 1:06				
			61-48	3 1:06		A Weathers	Charge Taken	
A Azubuike	Enter Game	for S Novosel	61-48	3 1:06		A Bruckner	Enter Game	for S Owens
R Rhule	Enter Game	for N Davis	61-48	3 1:06				
A Azubuike	Def Rebound		61-48	3 1:06				
N Novosel	Layup Made	A Azubuike Assist	63-48	3 0:58		B Garr	3Pt Attempt	
A Azubuike	Personal Foul		63-48	3 0:48 +15				
A Azubuike	Leave Game		63-48	3 0:44				
N Davis	Enter Game	for R Rhule	63-48	3 0:44				
S Novosel	Enter game		63-49	3 0:44		R Gray	FT Made	
			63-50	3 0:44 +14		R Gray	FT Made	
S Novosel	Turnover	(Bad Pass)	63-50	3 0:44 +13				
			63-50	3 0:32				
			63-52	3 0:31		A Weathers	Steal	
A Sickles	FG Made	N Davis Assist	63-52	3 0:29 +11		R Gray	FG Made	
			65-52	3 0:07 +13				
			65-52	3 0:01		R Gray	FG Attempt	SCOTT Off Reb

End of Period Summary Lady Knights 65 Lady Cardinals 52

Largest Lead: Lady Knights 59 Lady Cardinals 41 (18 pts)

Lead in Period: Lady Knights 59 Lady Cardinals 41 (18 pts)

5 for 6 oppo pts  
2 for 2 pts  
7/13 for 53.8 %  
3/4 for 75.0 %

Turnovers  
2nd Chances  
Field Goals  
Free Throws

Lead Changes: 0 Ties: 1

Lead Changes: 0 Ties: 0 (this period)

2 for 2 oppo pts  
6 for 2 pts  
9/20 for 45.0 %  
2/2 for 100 %

2005 HOUCHENS INDUSTRIES/KHSAA GIRLS' SWEET 16 - Play by Play Report - Period: 4 (pg 1)

Lexington Catholic Lady Knights vs. Scott County Lady Cardinals

Date: 03/25/2005 Time: Noon CST Site: Diddle Arena-Bowling Green, KY Attendance:

Name	Action	Action	Score	Clock	Diff	Name	Action	Action
				4 7:47		R Gray	FG Attempt	A Bruckner Off Reb
			65-54	4 7:45	+11	A Bruckner	Putback Made	
S Novosel	FG Made		67-54	4 7:34	+13			
B Green	Def Rebound			4 7:24		A Weathers	3Pt Attempt	
A Sickles	FG Made	B Green Assist	69-54	4 7:07	+15			
S Novosel	Personal Foul			4 6:55				
				4 6:55		M Howard	Enter Game	for B Garr
				4 6:55		S Owens	Enter Game	for A Bruckner
K Snowden	Enter Game	for S Novosel		4 6:55				
			69-56	4 6:46	+13	R Gray	FG Made	
A Sickles	Turnover	(Bad Pass)		4 6:31				
				4 6:31		C Lymon	Steal	
			69-59	4 6:20	+10	M Howard	3Pt Made	C Lymon Assist
LCATH	Partial Time Out			4 6:08				
N Novosel	FG Made	N Davis Assist	71-59	4 6:02	+12			
			71-61	4 5:44	+10	A Weathers	FG Made	
N Davis	Offensive Foul			4 5:33				
N Davis	Turnover			4 5:33				
A Azubuike	Enter Game	for N Davis		4 5:33				
A Sickles	Def Rebound			4 5:33		A Weathers	FT Attempt	
K Snowden	FT Made		72-61	4 5:14	+11	C Lymon	Personal Foul	
K Snowden	FT Made		73-61	4 5:14	+12			
B Green	Def Rebound			4 5:08		R Gray	FG Attempt	
N Davis	Enter Game	for A Azubuike		4 5:04				
A Sickles	Turnover	(Bad Pass)		4 4:56				
				4 4:55		A Weathers	Steal	
A Azubuike	Enter Game	for N Davis		4 4:53				
				4 4:42		M Howard	3Pt Attempt	S Owens Off Reb
				4 4:34		C Lymon	FG Attempt	A Weathers Off Reb
				4 4:31		A Weathers	Putback Att	C Lymon Off Reb
				4 4:23		C Lymon	Turnover	(Bad Pass)
				4 4:23		S Owens	Personal Foul	
N Davis	Enter Game	for A Azubuike		4 4:23				
N Davis	Turnover			4 4:11				
A Azubuike	Enter Game	for N Davis		4 4:11				
				4 4:11		A Bruckner	Enter Game	for S Owens
				4 3:54		R Gray	Turnover	(Traveling)
N Davis	Enter Game	for A Azubuike		4 3:54				
N Davis	Personal Foul			4 3:42				
N Davis	Turnover			4 3:42				
A Azubuike	Enter Game	for N Davis		4 3:42				
A Sickles	Def Rebound			4 3:42		A Weathers	FT Attempt	
K Snowden	Turnover	(Traveling)		4 3:27				
			73-63	4 3:20	+10	R Gray	FG Made	
				4 3:20		SCOTT	Partial Time Out	
S Novosel	Enter Game	for A Azubuike		4 3:20				
				4 3:00				
				4 2:42		A Weathers	Personal Foul	
	Official Time Out			4 2:42			Official Time Out	
A Azubuike	Enter Game	for S Novosel		4 2:42				
K Snowden	FT Made		74-63	4 2:42	+11			
K Snowden	FT Made		75-63	4 2:42	+12			
B Green	Def Rebound			4 2:34		R Gray	FG Attempt	
				4 2:14		C Lymon	Personal Foul	
				4 2:14		S Owens	Enter Game	for A Bruckner
K Snowden	FT Made		76-63	4 2:14	+13			
K Snowden	FT Made		77-63	4 2:14	+14			
B Green	Personal Foul			4 1:57				
S Novosel	Enter Game	for A Azubuike		4 1:57				
			77-64	4 1:57	+13	C Lymon	FT Made	
			77-65	4 1:57	+12	C Lymon	FT Made	

2005 HOUCHEM INDUSTRIES/KHSAA GIRLS' SWEET 16 - Play by Play Report - Period: 4 (pg 2)

Lexington Catholic Lady Knights vs. Scott County Lady Cardinals

Date: 03/25/2005 Time: Noon CST Site: Diddle Arena-Bowling Green, KY Attendance:

Name	Action	Action	Score	Clock	Diff	Name	Action	Action
LCATH	Time Out			4 1:44				
				4 1:41		C Lymon	Personal Foul	
				4 1:41		B Garr	Enter Game	for C Lymon
B Green	FT Made		78-65	4 1:41	+13			
B Green	FT Made		79-65	4 1:41	+14			
			79-67	4 1:34	+12	R Gray	FG Made	
B Green	FT Made		80-67	4 1:07	+13	B Garr	Personal Foul	
B Green	FT Attempt			4 1:07		A Weathers	Def Rebound	
				4 0:59		R Gray	Turnover	
B Green	Steal			4 0:59				
				4 0:59		A Weathers	Personal Foul	
B Green	FT Attempt	LCATH Deadball Reb		4 0:59				
B Green	FT Made		81-67	4 0:59	+14			
				4 0:47		R Gray	Turnover	
B Green	Steal			4 0:46				
K Snowden	Layup Att	B Green Off Reb		4 0:44				
B Green	Putback Att	B Green Off Reb		4 0:42				
B Green	Putback Att	S Novosel Off Reb		4 0:41				
K Snowden	Leave Game			4 0:38				
A Devers	Enter Game	for S Novosel		4 0:38				
L Server	Enter game			4 0:38				
B Green	Turnover	(Bad Pass)		4 0:27				
				4 0:26		S Owens	Steal	
			81-69	4 0:25	+12	S Owens	Layup Made	
				4 0:19		S Owens	Personal Foul	
				4 0:19		A Bruckner	Enter Game	for S Owens
A Sickles	Leave Game			4 0:19				
K Scordo	Enter Game	for N Novosel		4 0:19				
K Cash	Enter game			4 0:19				
B Green	FT Made		82-69	4 0:19	+13			
B Green	FT Made		83-69	4 0:19	+14			
E Elam	Enter Game	for B Green		4 0:19				
K Scordo	Personal Foul		83-70	4 0:02	+13	R Gray	FT Made	
			83-71	4 0:02	+12	R Gray	FT Made	
K Cash	Turnover	(Bad Pass)		4 0:00				

End of Period Summary Lady Knights 83 Lady Cardinals 71

Largest Lead: Lady Knights 59 Lady Cardinals 41 (18 pts)

Lead in Period: Lady Knights 69 Lady Cardinals 54 (15 pts)

Lead Changes: 0 Ties: 1

Lead Changes: 0 Ties: 0 (this period)

8 for 7 oppo pts

3 for 0 pts

3/6 for 50.0 %

12/14 for 85.7 %

Turnovers

2nd Chances

Field Goals

Free Throws

4 for 1 oppo pts

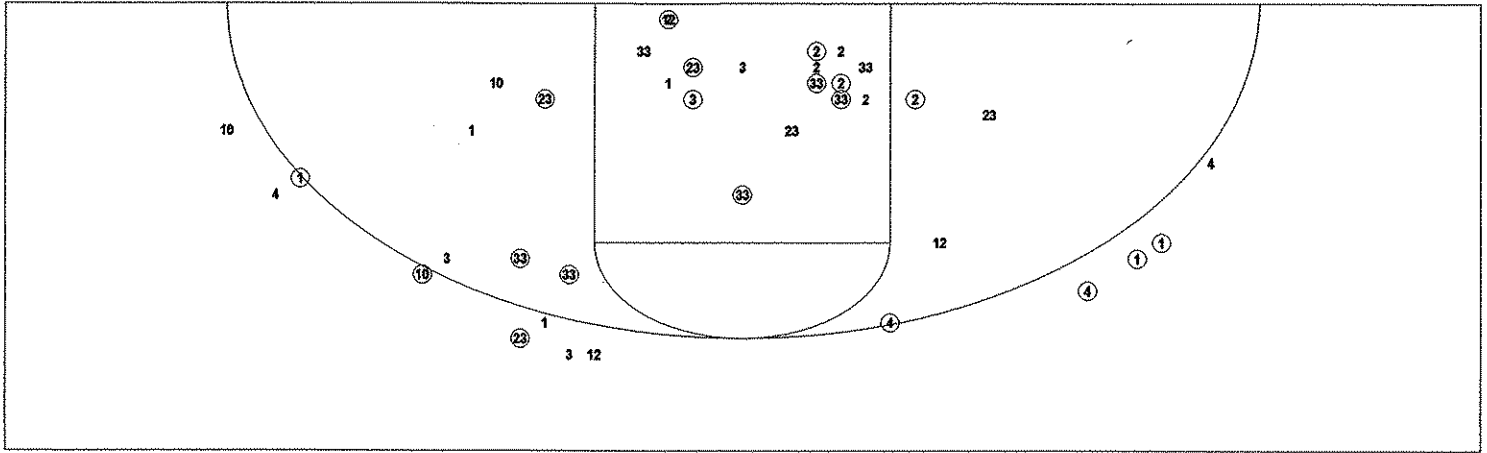
4 for 2 pts

7/14 for 50.0 %

4/6 for 66.7 %

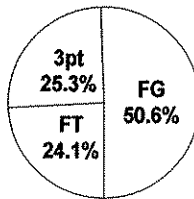
2005 HOUCHENS INDUSTRIES/KHSAA GIRLS' SWEET 16 - TEAM SHOT CHART for the Lexington Catholic Lady Knights

Lexington Catholic Lady Knights vs. Scott County Lady Cardinals  
 DATE: 03/25/2005 TIME: Noon CST SITE: Diddle Arena-Bowling Green, KY

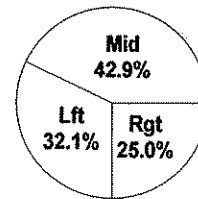


Shot Summary	M/A	%	PTS
3Pt FG	7/14	50.0%	21
2Pt FG	21/39	53.8%	42
Layups - L	3/6	50.0%	6
Layups - R	3/3	100.0%	6
Dunks	0/0	0.0%	0
Putbacks	3/5	60.0%	6
Overall Shooting	28/53	52.8%	63
Free Throws	20/24	83.3%	20
Total Points			83

Scoring Distribution

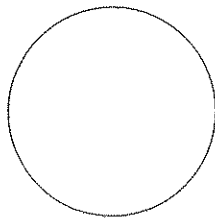


Scoring Locations

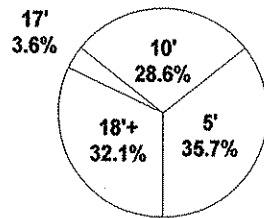


By Period	FG	FGA	FG%	3Pt	3PA	3P%	FT	FTA	FT%	PTS	ORB	DRB	TR	PF	AST	TO	BS	ST	P/S
1st Period	6	16	37.5	3	8	37.5	1	2	50.0	16	4	8	12	4	4	5	1	1	0.94
2nd Period	12	18	66.7	3	4	75.0	4	4	100	31	3	5	8	4	6	1	2	1	1.55
3rd Period	7	13	53.8	1	2	50.0	3	4	75.0	18	2	5	7	5	5	5	1	1	1.20
4th Period	3	6	50.0	0	0	0.00	12	14	85.7	18	3	5	8	5	2	8	0	2	1.38
Game	28	53	52.8	7	14	50.0	20	24	83.3	83	12	23	35	18	17	19	4	5	1.28

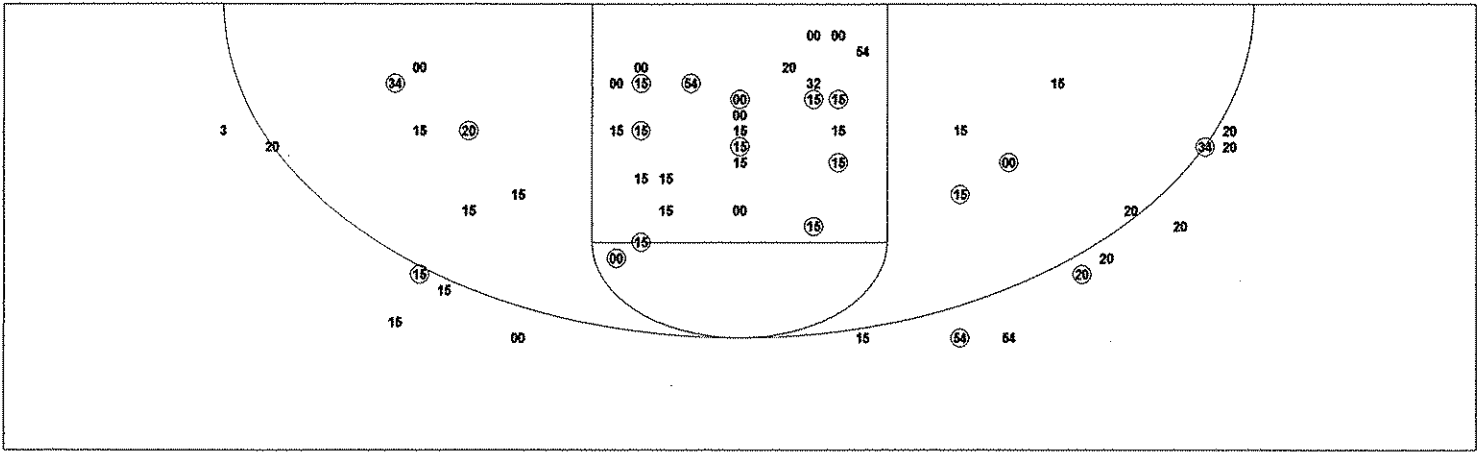
Scoring Breakdown



Scoring Range

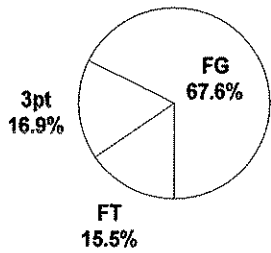


**2005 HOUCHENS INDUSTRIES/KHSAA GIRLS' SWEET 16 - TEAM SHOT CHART for the Scott County Lady Cardinals**  
 Lexington Catholic Lady Knights vs. Scott County Lady Cardinals  
 DATE: 03/25/2005 TIME: Noon CST SITE: Diddle Arena-Bowling Green, KY

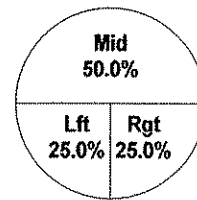


Shot Summary	M/A	%	PTS
3Pt FG	4/16	25.0%	12
2Pt FG	24/50	48.0%	48
Layups - L	4/4	100.0%	8
Layups - R	2/2	100.0%	4
Dunks	0/0	0.0%	0
Putbacks	3/7	42.9%	6
Overall Shooting	28/66	42.4%	60
Free Throws	11/16	68.8%	11
Total Points			71

Scoring Distribution

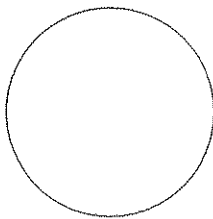


Scoring Locations



By Period	FG	FGA	FG%	3Pt	3PA	3P%	FT	FTA	FT%	PTS	ORB	DRB	TR	PF	AST	TO	BS	ST	P/S
1st Period	4	15	26.7	0	3	0.00	1	2	50.0	9	4	5	9	3	0	6	4	1	0.56
2nd Period	8	17	47.1	1	4	25.0	4	6	66.7	21	4	4	8	4	4	3	0	1	1.05
3rd Period	9	20	45.0	2	6	33.3	2	2	100	22	6	5	11	4	3	2	0	2	1.05
4th Period	7	14	50.0	1	3	33.3	4	6	66.7	19	4	1	5	8	1	4	0	3	1.12
Game	28	66	42.4	4	16	25.0	11	16	68.8	71	18	15	33	19	8	15	4	7	0.96

Scoring Breakdown



Scoring Range

